

Mulch Blends



- This blend is designed to pump more easily than 100% wood fiber
- 50 lb. bales make it easy to handle and load
- Dyed a dark green color for easy metering

Application Rates:

- 3/1 slope 1500 lb. Per. Acre
- Greater than 3/1 slope 2000 lb. Per. Acre

Tacking Agent 3™

- University Tested and Proven to reduce soil erosion and water runoff immediately after hydro-seeding, no cure time required!
- Contains a combination of hydro-colloid polymers including co-polymer of acrylamide
- Increases the water holding capacity of all types of hydraulic mulches
- Enhances seedling emergence and turf establishment

Typical Application Rate:

- > 2:1 slope - 60 lbs per acre
- 4:1 slope - 30 lbs per acre

Packaging:

- 8 lb bag 4 per 32 lb case 60 cases per pallet
- 25 and 50 lb bags



Jet Spray® with Fiber Max™



- Excellent choice for the smaller jet agitated hydro-seeding machines. 300/500 gal. Cap.
- Reduces loading time considerably
- Dyed rich dark green color (no messy dye packs to handle)
- Increased fiber to water yield

Application Rates:

- 4/1 slope 1500 lb. Per. Acre
- Greater than 4/1 slope 2000 lb. Per. Acre
- 50 lbs Per. 100 gals. of water when hydro-seeding

Other Erosion Control Products

EROSION CONTROL BLANKETS & BIO LOGS

- S31 (straw blanket) 8 x 112.5 = 100 sq. yards
- S32 (straw blanket) 8 x 112.5 = 100 sq. yards
- S300 (70% straw/30% coconut) 7.5 x 120 = 100 sq. yards
- S400 (100% coconut) 7.5 x 120 = 100 sq. yards
- Bio Sediment Logs 9" x 25 ft long

MIRAFI RIP RAP FABRIC

- 1120N (12 oz.) 15 x 300 = 500 sq. yards/roll
- 180N (8 oz.) 15 x 300 = 500 sq. yards/roll
- 170N (7 oz.) 15 x 300 = 500 sq. yards/roll
- 140N (4 oz.) 15 x 300 = 500 sq. yards/roll

DIMEX PRO LIP-20ft. Strips with stake kits

WEED BARRIER

- 3 x 300 = 100 sq. yards
- 6 x 300 = 200 sq. yards

STAPLE GUN

STAPLES-1 box = 1000 staples
(1 box per 10 rolls of material)

SLIT FENCE

3 ft. wide by 100 ft. long



EROSION CONTROL PRODUCTS



2541 Commerce St
La Crosse WI 54603
608-783-9560
800-328-1909
www.lftseed.com

Lawn Starter Mulch™



- The Professional Choice
- Features both Advanced Soil Technology™ AST® and SPARKLE™ technology
- Perfect solution for new lawn establishment or any small or large spot repair
- Applied easily through any spreader or hydro seeder
- Weed free and biodegradable
- Prevents soil erosion, resists soil crusting, increases water retention
- Encourages larger plant root systems
- Combine ENCAP® mulches with any grass seed for the perfect lawn solution
- **50 lb. bags that covers up to 2500 sq. ft.**

Pam-12™



- Helps prevent soil erosion, reduce fertilizer runoff, and save water
- Features Advanced Soil Technology™ AST® granules. Better soil means better results. Period.
- Can be applied easily with a spreader or hydro seeder
- Resists soil crusting
- Increases water retention
- Encourages larger plant root systems
- Used on golf courses, construction sites, in right-of-way projects, DOT work, new lawn installations, and as a lawn care product
- **50 lb. bags that covers up to 6000 sq. ft.**

Grass Repair Kit™



- Easy no clumping
- Available in 2 sizes—6# or 2.40#
- Great for those little spot touch-ups or that thin area in your lawn
- Contains the AST® product, Fertilizer and seed
- More coverage area for the size of the container than most of the competition
- Packaging allows for higher store profits with less space used
- Contains SPARKLE™ technology
- **6# Container: covers 300 sq ft** and has 6 per case
- **2.40# Container: covers 100 sq ft** and has 12 units per case
- Product suggestion: As a landscaper, why not leave one of these handy kits with the homeowner, decrease the return trip expense and look ahead for the homeowner

Netless Seed Protector® Mat



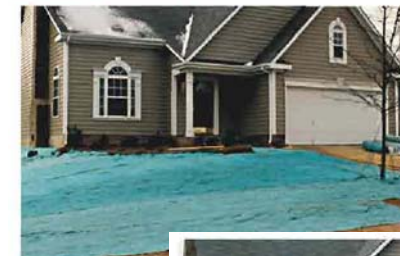
- Best way to grow grass, guaranteed
- Provides the fastest grass germination and superior protection
- No more tangles to trap animals and mowers
- Ideal for small contractors and walk-in traffic
- **39" x 50' roll = 18 sq. yds.**

Futerra®



- Offers the highest cover factor (.012) which minimizes soil and seed washouts, especially on hills and slopes
- Unparalleled in performance, ease, cost of installation and aesthetic appeal, nothing outperforms Futerra®
- From construction projects to residential lawns and golf courses, Futerra's® reliability for growing grass is unsurpassed
- Bonds to the soil surface to prevent under blanket washouts and seed migration.
- Superior technology and innovative design allow Futerra® to rapidly absorb water and hold it in place for enhanced germination
- Designed to provide highly effective erosion control and vegetation establishment for up to 10 months
- **Dimensions: 82" X 135' = 102.5 sq. yds.**

PROVEN RESULTS



Before



After just 3 weeks